

Folios in Derived Answers

This walkthrough uses a Derived Answer as an intermediary step to create a List of Passages that are selected with a Tag.

Prerequisites:

- The “Recipes” Folio from [Tag Passages](#); **OR**
- Open [this Folio document](#) and [import](#) it

You will:

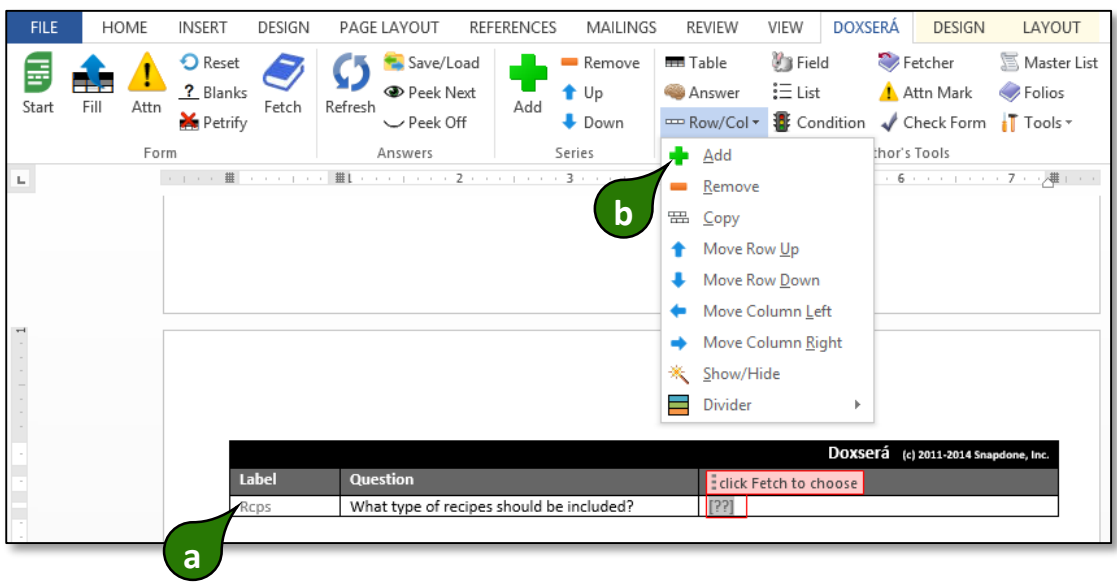
- Create a Derived Answer that determines which recipes have been selected
- Create a List that uses the results of the Derived Answer



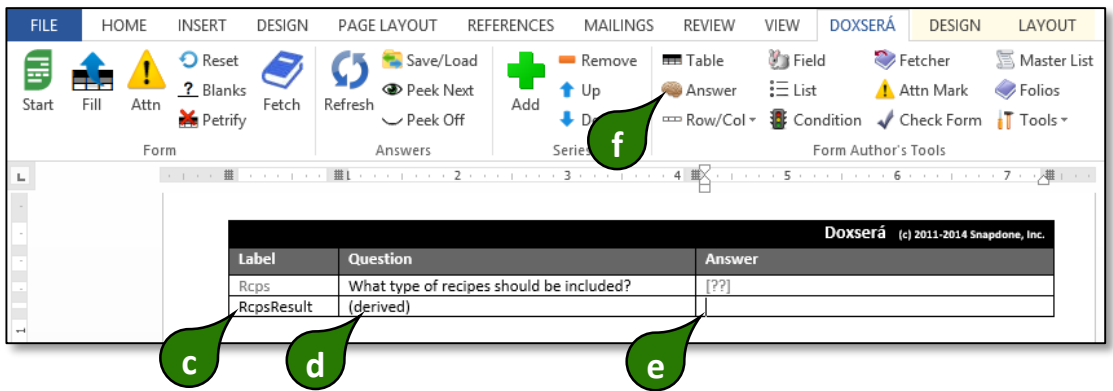
The [Passages in Lists](#) walkthrough shows how to List Passages when each Passage is chosen by the form user. But how do you List Passages when the form user chooses a Tag without identifying particular Passages? You must create a Derived Answer that determines the selected Passages, then create a List that uses the results of the Derived Answer.

1 Quick Start Open this partially completed form: [Cookbook 6](#)

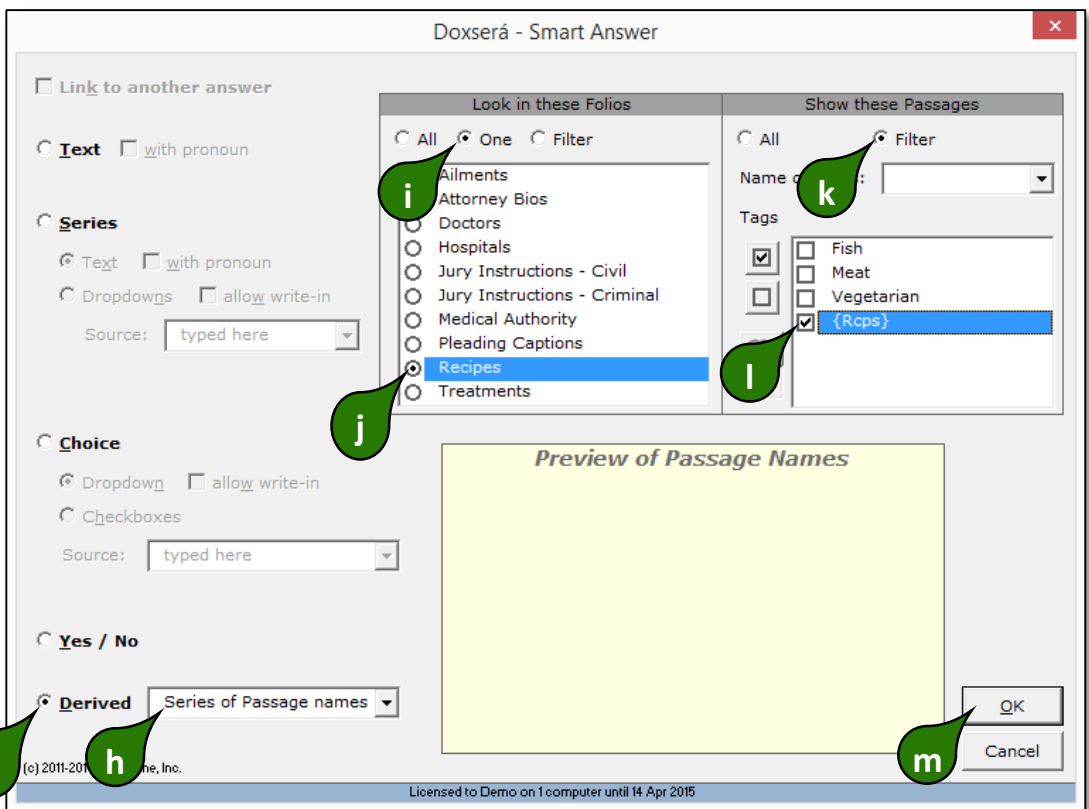
2 Add a Derived Answer
a Place the cursor anywhere in the **Rcps** row
b Click **Row/Col, Add**



c Type the label **RcpsResult**
d Type the question (**derived**)
e Place the cursor in the **RcpsResult** answer box
f Click **Answer**



g Select **Derived**
h Select **Series of Passage names**
i Select **One** in the **Look in these Folios** panel
j Select the **Recipes** Folio
k Select **Filter** in the **Show these Passages** panel
l Since we don't know in advance which Tag will be chosen, select **{Rcps}** to use the form user's response to the Rcps question
m Click **OK**



3 Continue with... Pick up with Step 2 of [Passages in Lists](#), but **each time you see Rcps, replace it with RcpsResult**

... and Presto

The form is complete

**The Adequate Cookbook
for Adequate Cooks**

Here are some recipes you're sure to enjoy.

[[[RcpoResult#X]]]

[[[recipe]]]

[[[dino]]|[[[dino]]]]

Happy cooking!

Label	Question	Answer	Comments
Topic	What type of recipes should be included?	[Y/N]	
ResponseID	[[[dino]]]	[Y/N]	

▲ Folios in Derived Answers

Related Info

 [Overview](#)  [Walkthrough](#)  [Lesson](#)  [Video](#)  [Guide](#)

 [Folio Overview](#)

 [Folios in Derived Answers](#)

 [Passages in Lists](#)

 [Smart Answer screen details for Folios](#)