

Fetcher screen details

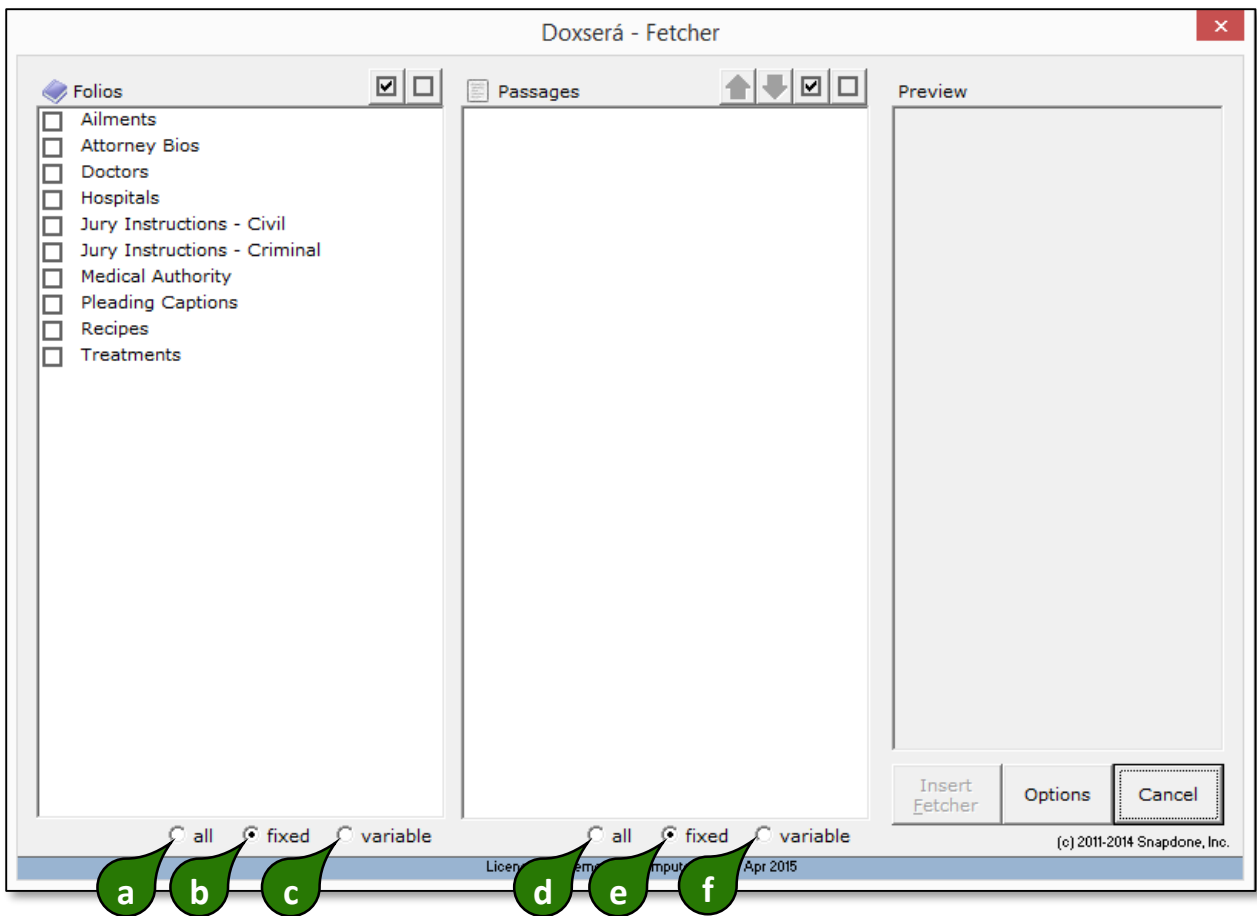
The Fetcher screen is identical to the Fetch screen ([Fetch screen details](#)), except as noted here



1

Fetcher screen

Click **Fetcher** to open the Fetcher screen

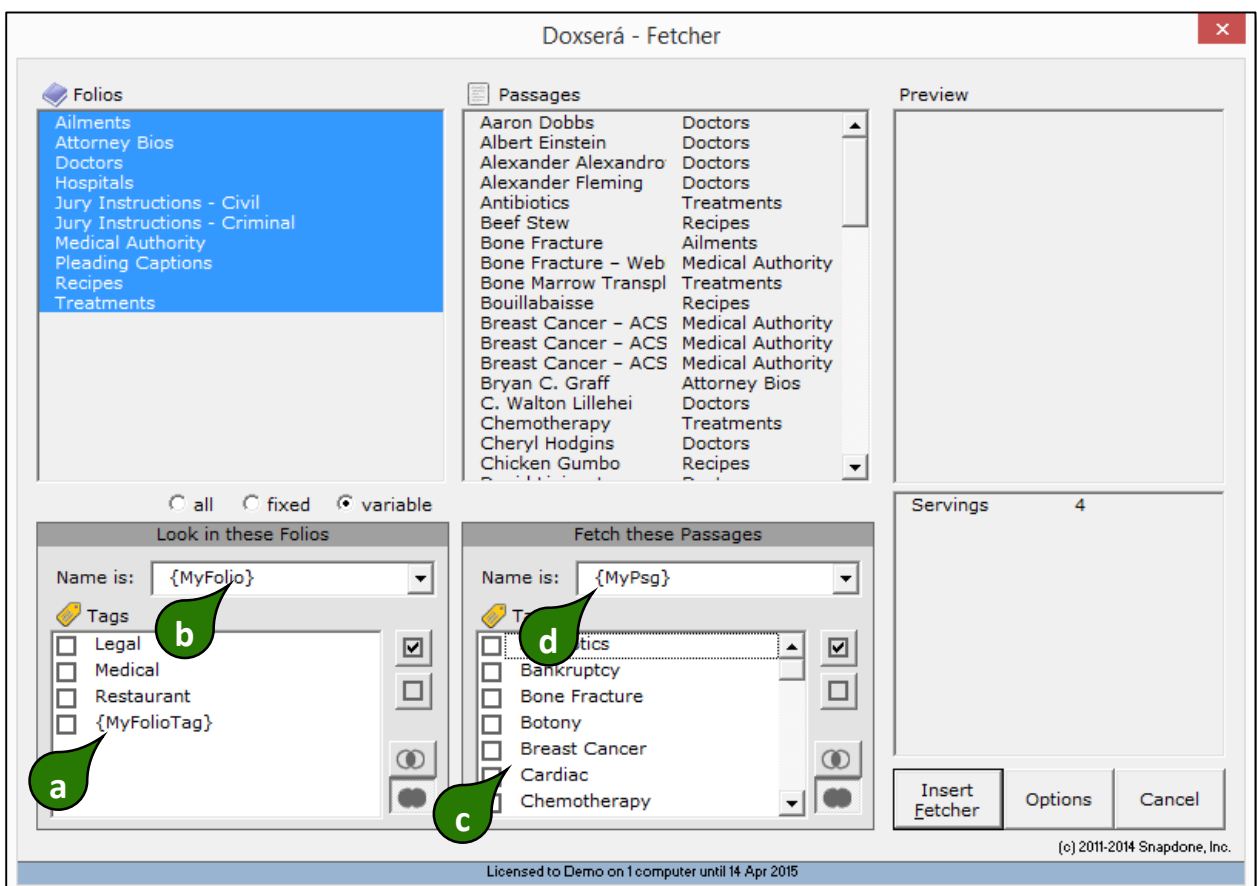


- a** Click **all** if the Passages to be fetched are drawn from the pool of all Folios.
- b** Click **fixed** if the Passages to be fetched are drawn from a limited set of Folios that you can identify right now.
- c** Click **variable** if the Passages to be fetched are drawn from a set of Folios that depends on tagging and/or responses in the Q&A Table.
- d** Click **all** if all of the Passages in the selected Folios are to be fetched.
- e** Click **fixed** if the Passages to be fetched can be identified right now.
- f** Click **variable** if the Passages to be fetched depends on tagging and/or responses in the Q&A Table.

2

Filters and options

After turning on the variable panels (**c** and **f** above):



- a** The list of Folios Tags may include items in curly braces { }. They are Q&A Table questions that ask the form user to choose Folio Tags. Select one when you want the user's response to determine which Folio Tags are selected.
- b** This box may include items in curly braces { }. They are Q&A Table questions that ask the form user to choose Folio names. Select one when you want the user's response to determine which Folio names are selected.
- c** The list of Passage Tags may include items in curly braces { }. They are Q&A Table questions that ask the form user to choose Passage Tags. Select one when you want the user's response to determine which Passage Tags are selected.
- d** This box may include items in curly braces { }. They are Q&A Table questions that ask the form user to choose Passage names. Select one when you want the user's response to determine which Passage names are selected.

▲ [Fetcher screen details](#)

Related Info

[Overview](#) [Walkthrough](#) [Lesson](#) [Video](#) [Guide](#)

[Folio Overview](#)